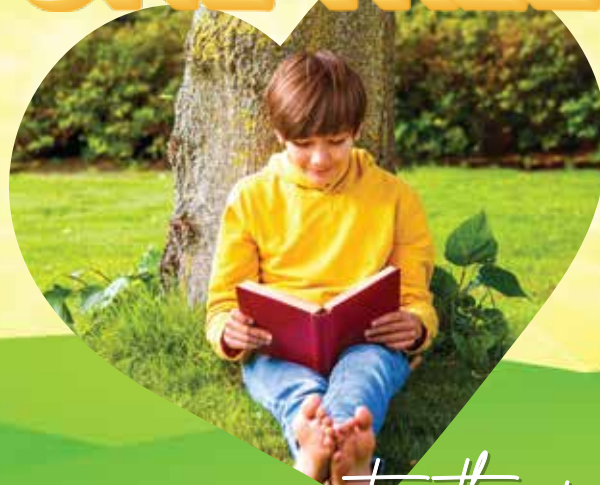


# ONE CHILD ONE TREE™

*Give them a gift  
that lasts a lifetime!*

HyVee, ImOn, and  
Monarch Research  
are offering your child  
or grandchild their own  
native tree - **FREE!**



*...growing together!*





**HyVee**®






## 2025 Program Overview

Monarch Research has partnered with local HyVee stores and drugstores, and ImOn Communications to provide parents and grandparents a **free native tree** for each child or grandchild, through our **One Child, One Tree™ — Growing Together** initiative. The innovative initiative aims to foster a deep connection between children and nature by offering complimentary native trees to parents and grandparents in Linn County.

## STEP-BY-STEP PROGRAM INSTRUCTIONS

-  **1 Participating HyVee stores and HyVee Drugstores, and ImOn Communications will provide you with a certificate.** This will allow you to order one tree per child. You can obtain this certificate at the customer service counter inside HyVee Stores and Drugstores, or at the front desk at ImOn Communications.
-  **2 You must have a certificate to order a tree for your child or grandchild.** If your certificate has an Order Code at the bottom, you must enter this when prompted; it is required to complete the online order form.
-  **3 There is no certificate expiration.** You may order your tree at any time (subject to availability), or you may save your certificate and order later. Species supply is limited, when we run out of inventory, that species will no longer show as available. Order deadline is September 10, 2025.
-  **4 Order your child or grandchild's tree online.** Scan the QR Code on your certificate to place your order. If prompted, you will be required to enter the Order Code from your certificate. Note: if you have any difficulties placing your order, please contact Monarch Research at [info@monarchresearch.org](mailto:info@monarchresearch.org).

-  **5 Select a tree species.** Once you enter the order form section, download the Species Selection document to view available tree species. This document provides species information and will help you determine the appropriate tree for your available space.
-  **6 Select a planting location.** The order form will ask you to identify an area for planting, including 1) Home or Rental property, or 2) Friend or Relative's property.
-  **7 Tree Pick-up.** Once you have successfully completed and submitted your order, you will receive an email confirmation. More details regarding tree pickup will be provided by Monarch Research at a later date.

**Tree Pickup Timeline:** Tree pickup will be in **October** at a designated location to be determined closer to pick up date.

**By following these easy steps, you can easily participate in Monarch Research's One Child, One Tree™ initiative!**

Questions? Email us at [info@monarchresearch.org](mailto:info@monarchresearch.org).